



Assessment Report



for
Vikas Kumar

XXXXXX
XXXXXX

XXXXXX
XXXXXX

About the Report

About MECAT

MECAT, conducted by the Media and Entertainment Skills Council, is India's largest aptitude test for admissions to various programs in the Media & Entertainment Sector, including animation, visual effects, gaming, and filmmaking. It is widely accepted by numerous universities, colleges, and training institutes across the country. MECAT serves as a standardized test to assess a candidate's creativity, aptitude, and readiness to pursue a career in the Media & Entertainment Sector.

Understanding the Report

To assist individuals in identifying the best career options available, it is crucial to possess comprehensive knowledge about their aptitudes, skill orientations, and behavioural abilities. Advanced technological innovations are utilized for this purpose, ensuring accurate and complete results regarding individuals' skills, aptitudes, and behavioural abilities. You have successfully completed a scientifically proven assessment test based on the aforementioned criteria. The following pages will present you with a detailed report based on your assessment, which will guide you towards your career path. It is advised to review the report attentively as it will provide valuable insights.

Report Structure

This report is divided into three sections to provide a comprehensive analysis:

Part 1 - Personality: This section focuses on understanding your core personality and associated behaviours. It covers various aspects such as your strengths, weaknesses, decision-making patterns, interpersonal relationship patterns, and communication style. By exploring these aspects, you can gain insights into your personality traits and how they influence your career choices.

Part 2 - Multiple Intelligence Orientation: This section utilizes the MIO assessment to help you identify your different orientations to intelligences. It serves as an indicator of your interests and preferences regarding various skill sets. Understanding your multiple intelligence orientations can guide you towards career paths that align with your strengths and areas of interest.

Part 3 - Suitable Media and Entertainment Career Segments (Career Families): Fitment, or the suitability of a career, is the central focus of this section. Here, you will discover the fitment percentage for each Media and Entertainment career option based on your assessment. A higher fitment percentage indicates a greater likelihood of success in a specific Career Segment. Furthermore, this section provides an overview of different careers available within each Media and Entertainment Career Segment, helping you explore potential avenues in the Media and Entertainment industry.

Note: This report is based solely on the responses you provided during the assessment and does not take into account your educational background or qualifications. Instead, it offers valuable insights into your aptitudes, expertise, behavioural abilities, and more.

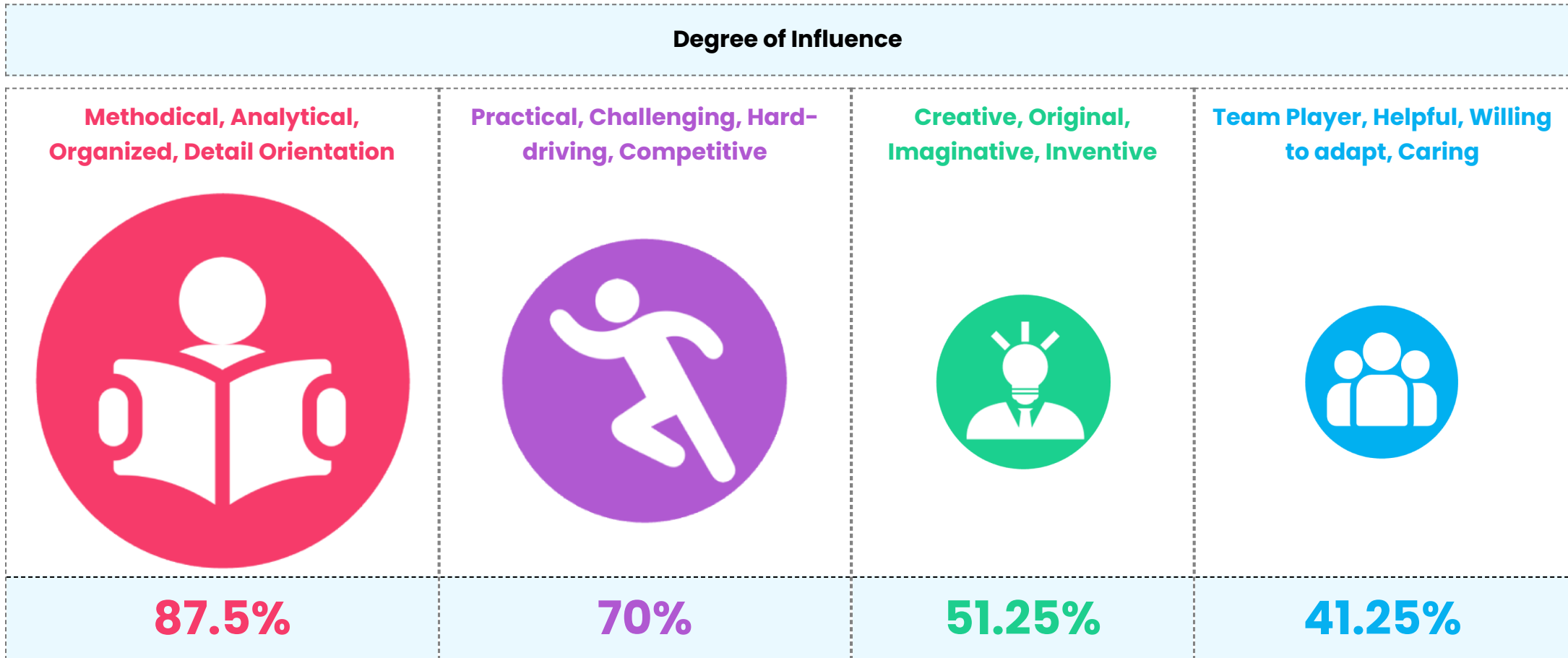


Part 1

Personality Report

Your Core Behaviour

Below is a measure of your Behavioural Ability. As the percentage increases, the expression of the characteristics of each style can be considered to increase.



Understanding yourself

Your general behavior is as follows:

You are a systematic and result-oriented individual who is enthusiastic about everything that you involve yourself with.



Even though you may seem very formal, you are not hesitant to take up new challenges and seize any opportunity that may come your way.



You are, in general, an active and energetic person who loves to take up challenges and is diligent in completing whatever task is assigned to you.



You can be creative and outgoing if the situation demands it, but otherwise you prefer to follow the conventional methods.



You are very observant and keenly analyzes everything around you. This ability will allow you to maintain an objective outlook towards life.



People around you admire your energy and drive to accomplish tasks. Your enthusiasm coupled with your methodical approach will yield the desired results.

Your Career Strengths

Your career strengths are as follows:

Career Strength	Need focus	Progressing	Blooming	Advancing	Master
Quick in building relations and efficiently maintains them.		📍			
Details are carefully considered and accurate.					📍
Creative and easily innovative.		📍			
Capable of creating structure out of chaos and confusion.					📍
Enjoys adventure and may take risks in accepting most opportunities.			📍		
Ability to work in Teams.		📍			
Enjoys challenges and does not easily bend down to pressures.			📍		
Open and flexible to changes.		📍			
Quick in action and prefers quick results.			📍		
Always analyses oneself to correct past mistakes and advance further each time.					📍



Your associated weakness

You might always want things to go your way. Your conventional and formal nature makes you inflexible to try new things.

You might sometimes be perceived as demanding and impatient when you feel others are not performing according to your expectations.

Sometimes you may be tough and resistant to change as your belief in your methods will not allow you to try new things.

In your excitement to get things done, you might be unaware of the situation or people around you.

Notes

Being Fact and Action oriented, your comfortable zones of work could be those that require precise and accurate detailing which might need a leading guidance that can lead to achieving great results.

Your Communication Pattern

You prefer to communicate with the world in the following ways:

Communication Pattern	Need focus	Progressing	Blooming	Advancing	Master
Expresses emotional concern and care for the well-being of others.		📍			
Speaks and encourages visions for long-term plans and advancements.		📍			
To be a notable voice, may take over the conversations dominating the talk.			📍		
Provides precise and crisp explanations and instructions.					📍
Direct and defined speech.			📍		
Openly expresses thoughts and feelings.		📍			
May follow a structure and method while conversing.					📍
Overall goals and objectives are given more importance.		📍			
Friendly and free type of behavior to others.		📍			
Interested in finding out the reasons or causes of things.		📍			



You think about the long-term implications of a decision and how it may affect those involved in the future.



Your decisions are well-thought-out and planned. You make it a point to consider all possibilities before taking a decision.



How you take decisions



Your systematic approach allows you to break down any problem into manageable portions. This makes decision making easier.



You may take a lot of time to take decisions as your thorough nature does not permit you to decide without having carefully considered all the associated parameters.



Your interpersonal pattern

This is how you deal with people around you.

You might be rational and logical in your dealings and would have worked out an elaborate plan before you have a conversation.



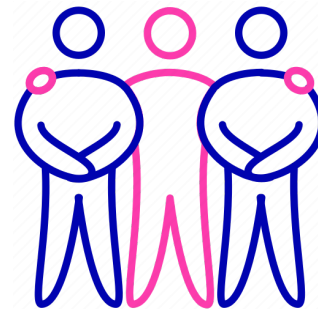
You tend to be formal and do not indulge in irrelevant conversations. This may cause people to perceive you as aloof and detached.



You may seem very energetic and your enthusiasm to convey and establish your ideas can unwittingly monopolize the conversation.



You prefer to be concise and brief in conversations. You do not believe in unnecessary chitchats.



How others view you

Based on your personality, this is how others view you.

People admire you for your speedy action and vibrant energy. You may be seen as a reliable person who is always there when one needs help.



Your efficient and objective manner in getting tasks accomplished will be highly appreciated among your co-workers.

You might be perceived as a poor listener who may not always be open to what others have to say. You tend to concentrate more on executing your plans.



People may perceive you as a bossy and demanding person because you want to get things done in a quick and effective manner.





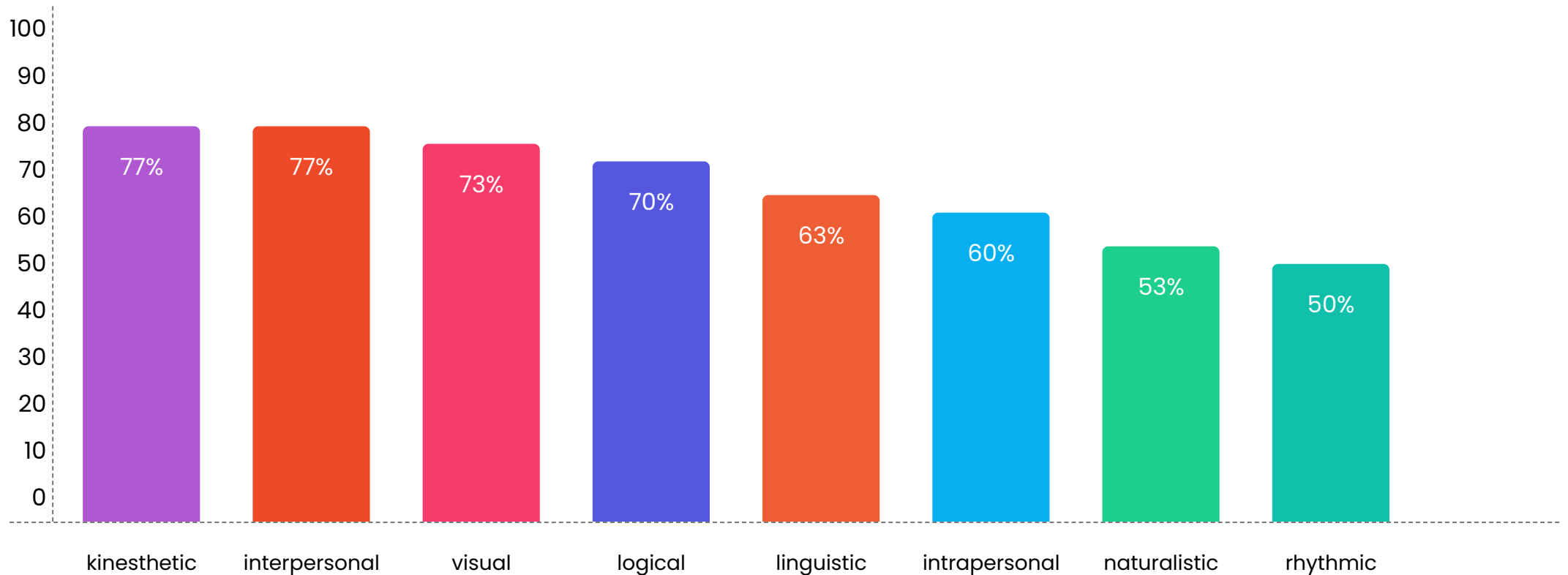
Part 2

Multiple Intelligence Orientation Report

Multiple Intelligence Orientation

The Multiple Intelligence Orientation test is an assessment based on the influential Multiple Intelligences theory by Howard Gardner. Each individual possess numerous intelligences in varying degrees. These intelligences can be nurtured to increase the quality of life and have strong ramifications in the classroom. It bridges the gap between your intelligences and career choice.

This test renders a new way of looking at your life, suggesting several ways in which you can apply your strengths and potentials.



Spread of Skills

Based on your Multiple Intelligence Orientations you are gifted with the following strengths.

Visual Smart



People who are able to visualise information by creating a mental model. They like to view and observe everything before taking action.

Body Smart



Body smart people are people who use physical skills such as balance, strength, flexibility, speed etc. They tend to be active, often like to work with their hand.

Nature Smart



Nature smart individuals tend to nurture and relate information from their natural surroundings. They have a knack for identifying plants and animals.

People Smart



People smart individuals are able to respond to the emotions of others. They are gifted at establishing rapport with strangers and make friends easily.

Word Smart



People who display strengths in speaking, writing and reading and have strength in acquiring languages. Their auditory skills are very well developed.

Self Smart



It is the ability to decipher and analyse your individual motives, desires thoughts and emotions. Self smart people have an innate ability to know oneself.

Logic Smart



Logic Smart people display an aptitude for numbers, reasoning and problem solving. Good at critical thinking and have well developed reasoning abilities.

Music Smart



Music Smart is the ability to perceive, transform and express musical forms. They tend to love music and rhythmic sounds.

Orientation detail

More about your multiple intelligence orientation

Body Smart

You may have the ability to express emotions, to play sports, and to develop new inventions.

You seem to have the ability to use your hands and fingers to carry out delicate movements requiring precise control.

You are likely to be highly sensitive and responsive to the environment around you.

You may have the ability to watch, observe, imitate, and re-create anything that you perceive.

You are likely to have a well-developed, coordinated and complex level of physical movement.

Visual Smart

You are likely to have creative talent, with the ability to visualize and design, see things in space, or even conjure up concepts in 2D and 3D formats.

You also have a keen sense of direction.

You may have the ability to think in images and pictures, to visualize accurately.

You may be skilled at using diagrams and charts to clearly understand ideas and concepts.

You may have a good sense of colour. Hence, you are likely to enjoy painting and other art forms.

People Smart

You may have an empathy for others hence, understanding their needs and concerns you may act accordingly.

You seem to have the ability to work well with others, learning and contributing to their personal development.

You can be highly skilled at verbal and non-verbal communication. So you may enjoy being part of social events.

You seem to be able to maintain good relationships with people and may enjoy being a part of social events.

Logic Smart

You may be good at creating codes and formulas as you may like the challenge of a complex problem

You may enjoy learning by solving puzzles, logical games and investigations.

You may follow an organized and systematic approach towards learning.

You are likely to be more inclined towards science subjects and can easily remember dates.

Word Smart

You may like to read, write, listen and can be good at spelling and word games. You may have a good memory.

You are likely to be particular about expressing yourself and can get irritated when others do not do the same

You may have the capacity to use language to accomplish certain goals as well as communicate your viewpoints in a clear, beautiful, and refined manner.

You seem to easily remember quotes and famous sayings and may have highly developed auditory skills.

Nature Smart

You may try to collect specimens from nature and keep them as souvenirs.

You may display a sense of surprise or express wonder at the various natural phenomena.

You seem to be interested in engaging in outdoor classes and prefer to learn about nature.

Self Smart

You are likely to be constantly analyzing yourself, trying to understand your role in relation to others and in the larger scheme of things.

You may be focused on becoming more aware of yourself and comfortable with your needs and interests.

You may probably prefer to work alone and may appear to be shy.

Music Smart

You can develop your ability to create melodies and play several musical instruments.

You are sensitive to the sounds around you.

You seem to get the beats right and have a good sense of rhythm

You may have the ability to identify musical notes and tones.

Spread of Skills

Expert



Advanced



Learner



Novice



Energetic

Action-oriented

Co-operating

Working relationships

Color Sense

Visualization Ability

Reasoning Skills

Analytical

Self-Awareness

**Curiosity about natural
phenomenon**

Sound Memory





Part 3

Media and Entertainment Career Fitment

Career Fitment Graph

Based on your assessment scores, shown below is your Career fitment Graph



Media Profession

74% fit

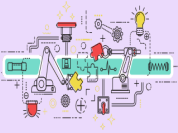
Based on your assessment, your overall Fitment towards Media and Entertainment Careers is 74 %

Within the Media and Entertainment Careers domain, there are several subsegments that offer various opportunities. Here is a list of careers within these subsegments along with their fitment percentages. Reviewing this information will assist you in making more informed decisions regarding your choice of careers in the Media and Entertainment industry:



Human Resource & Coordination

83% fit



Events Management

80% fit



Gaming and AR/VR

78% fit



Film Making

73% fit



Digital Marketing and Advertising

73% fit



Animation

72% fit



VFX and Editing

68% fit



Marketing and distribution

66% fit



Art & Design

66% fit



Journalism & Mass Communication

65% fit



Sound and Music

54% fit



Performing Arts

51% fit

Summary and Conclusion

We trust that this report has provided you with valuable insights into your aptitudes, skill orientations, and behavioural abilities.

It is important to note that this report is solely based on the responses you provided during the assessment, and it aims to assist you in discovering the most suitable career options for your future.

The Media and Entertainment Council wishes you a fulfilling and successful life, as well as a rewarding career journey.

We hope that the information presented in this report will guide you towards making informed decisions and embarking on a path that aligns with your strengths and interests.

Thank you for undertaking the assessment, and we extend our best wishes for your future endeavours.

MECAT

MEDIA AND ENTERTAINMENT
CREATIVE APTITUDE TEST